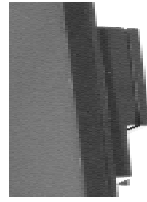


**SD400 Series
UPGRADE KIT
USER'S MANUAL
Rev. : Original**

**I. FEATURES**

- Optical Finger Print Sensor in USB interface
- Industry's most accurate fingerprint algorithm
- ISO 7811 Magnetic Stripe Reader in USB full speed HID interface
- Options for MSR heads covering 1&2 and all 3 tracks
- 3 tracks type MSR can read also AAMVA and CA DMV card
- Total power consumption: 300 mA @ 5V DC
- Upgrade kit for fanless touch terminals Jiva KS series and provides external access to audio ports of Jiva KS series.

FCC NOTICE

This equipment generates, uses, and can radiate radio frequency energy and, if not installed and used in accordance with the instructions manual, may cause interference to radio communications. It has been tested and found to comply with limits for a Class A digital device pursuant to subpart J of Part 15 of FCC Rules, which are designed to provide reasonable protection against interference when operated in a commercial environment. Operation of this equipment in a residential area is likely to cause interference in which case the user at his own expense will be required to take whatever measures to correct the interference.

WARRANTY LIMITS

Warranty will terminate automatically when the equipment is opened by any person other than the authorized technicians. The user should consult his/her dealer for the problem happened. Warranty voids if the user does not follow the instructions in application of this merchandise. The manufacturer is by no means responsible for any damage or hazard caused by improper application.

The hardware utility program, including instructions for its use, is provided "AS IS" without warranty of any kind. Posiflex Inc. further disclaims all implied warranties including without limitation any implied warranties of merchantability or of fitness for a particular purpose. the entire risk arising out of the use or performance of the software and documentation remains with you.

ABOUT THIS MANUAL

This manual is written in an attempt with full strength to assist the user to utilize the upgrade kit SD400 for the Posiflex fanless touch terminals Jiva KS systems. This series of products incorporate 2 delicately designed POS peripherals each can be used as an excellent tool to accommodate the required security specially involved in POS business, kiosk and hospitality operation. This manual covers the conceptual and operational aspects of these units. For technical aspects involving opening of the unit or option implementation, it is only available to the authorized distributors.

The manufacturer of the SD400 series heartily apologizes to the user for reserving the right to change or to modify this manual without notice due to the rapid and constant progress and improvement on science and technology. The user may always obtain the most up to date information through any of our web sites: <http://www.posiflex.com> or <http://www.posiflex.com.tw>.

© Copyright Posiflex Inc. 2006

All rights are strictly reserved. No part of this documentation may be reproduced, stored in a retrieval system, or transmitted in any form or by any means, electronic, mechanical, photocopying, or otherwise, without the prior written consent of Posiflex Inc. the publisher of this documentation

TRADE MARKS AND SERVICE MARKS

CE POSIFLEX is a registered trademark of Posiflex Inc., an ISO-9001 and ISO-14001 certified manufacturer.
Other brand and product names are trademarks and registered trademarks and service marks of their respective owners.

P/N: 19800900010

II. INSTALLATION**1. HARDWARE INSTALLATION**

For SD400 series ordered with the host system KS series, it is installed on the system at delivery. For separately ordered SD400 series, it is delivered separately from the system and needs to be fixed onto the system per following instructions before use.

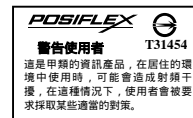
You may find two screw holes on back of the right side of the main unit of Jiva KS series. Remove these 2 screws to remove the cover for side mount upgrade kit. Take out the cable inside this cover as circled in right picture and remove the 2 shorting jumpers inside and then connect it to connector inside the side mount upgrade kit SD400 as arrowed in same picture. Gently arrange the excessive length of this cable back in the hole and screw-fit it back to the position originally occupied by the cover.



Please reserve the cover if there is chance to have the side mount kit removed in the future.

2. DRIVER INSTALLATION

1. **For Finger Print Sensor:** To include the drivers for this sensor to perform finger print registration or verification (authentication) in an AP requires the software programmer to purchase and utilize its SDK (software developer's kit). However, Posiflex delivers this optical finger print sensor with its drivers. Please find in the mini CD delivered with SD400 or Product Information CD delivered with Posiflex POS system the folder for "Posiflex Optical Finger Print Sensor" or download the installation program from our web <http://www.posiflex.com> or <http://www.posiflex.com.tw>.
2. **For MSR:** The magnetic stripe reader in SD400, no matter how many tracks are in the reader head, connects to the host through USB port working as a USB KB and therefore requires no driver installation except setting up the USB keyboard to be enabled in system CMOS setup if the OS does not do it automatically. Refer to "Operation Guide" for manipulation over the reader configuration.



III. OPERATION GUIDE

1. FINGER PRINT SENSOR

a. Cautions

1. Never pour the glass cleaner directly on the sensor window
2. Never use alcohol-based cleaners
3. Never submerge the sensor in liquid
4. Never rub the window with an abrasive material, including paper
5. Do not poke the window coating with your fingernail or any hard item, such as a pen.

b. Principle

The finger print sensor software never stores fingerprint images. The finger print sensor software creates a fingerprint template, which is a highly compressed and digitally encoded mathematical representation of fingerprint features. This template is created when a user registers a finger and is stored in an encrypted file. When the user later touches the fingerprint reader to authenticate, a new template is created and compared to the “registered” template. If there is a match, the authentication is successful.

c. Finger Print Recognition

In order for the sensor to acquire a good image of your finger, you must place the pad of your finger but not the tip in the center of the sensor window, and apply gentle, even pressure. Do not “roll” your finger as usually practiced in the traditional ink and paper fingerprint taking technique. Pressing too hard will distort your fingerprint. Pressing too lightly will not expose a large enough area of your finger. Also, make sure to hold your finger on the sensor until you see the sensor light blink; this may take longer for dry fingers. Then, lift your finger. Although you may use any finger with the sensor, your index finger of either hand works best. If the sensor is capturing your finger image as indicated by the sensor blink and you have tried all the above suggestions, you may need to reregister your finger.

d. Sensor Activation

There will always be a red light from the sensor to detect the presence of a finger when the sensor is activated. Failure to connect to a self-powered USB port will cause non-operation of the sensor. If you activate your terminal’s power saving functionality but your third party application does not support this, then your fingerprint sensor will enter “sleep mode” even though your workstation does not. If this occurs, you will need to disconnect and reconnect the sensor to the USB port. Please check with your application developer for compatibility.

e. Cleaning the Sensor

Depending on the amount of use, the sensor window may need to be cleaned periodically. To clean it, apply the sticky side of a piece of adhesive cellophane tape on the window and peel it away as in the drawing at right.

Under heavy usage, the window coating on some sensors may turn cloudy from the salt in perspiration. In this case, gently wipe the window with a cloth (**not paper**) dampened with a mild ammonia-based glass cleaner.



2. MAGNETIC STRIPE READER

The MSR in SD400 reads an ISO magnetic stripe card without driver. Yet, there is a “Posiflex USB MSR Manager” program provided to control some parameter configuration for this MSR. The features controllable in this program covers each track enable/disable, Alt+Num approach for ASCII codes and Leading/Stop code enable/disable. The function for enabling each track of course comes in effect only when the track is physically available. Please find in the mini CD delivered with SD400 or Product Information CD delivered with Posiflex POS system the folder for “USBMSR” and “SetUp” this demo program or download the installation program from our web <http://www.posiflex.com> or <http://www.posiflex.com.tw>.

3. SOUND PORTS

The audio port in KS system is arranged to have an internal audio speaker with maximum audio power of 2 W at lower left corner of the main unit but no direct access port in the main unit. The external access to audio ports can be found in the side mount option kit SD-400 with a Microphone in and a stereo line out jacks at its bottom surface as circled in the right picture. The internal speaker will be automatically disconnected when a plug is inserted in the line output jack.

